



M Series | M215BX |
21.5" Metal Industrial Touch Monitor

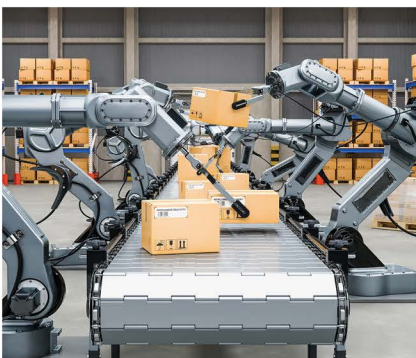


Key Features

- 1. Rimless metal bezel, Ergonomic enclosure design, Mechanical design for additional equipment installation.
- 2. Front bezel meet IP54 standard.
- 3. 21.5" diagonal screen with native resolution 1920 x 1080.
- 4. 16:9 aspect ratio for both Portrait and Landscape available.
- 5. VESA 100 x 100 wall mounting standard.
- 6. 10-Points projected capacitive touch panel, EETI multi-touch technology.
- 7. User friendly OSD control buttons with keys lockable.

Application

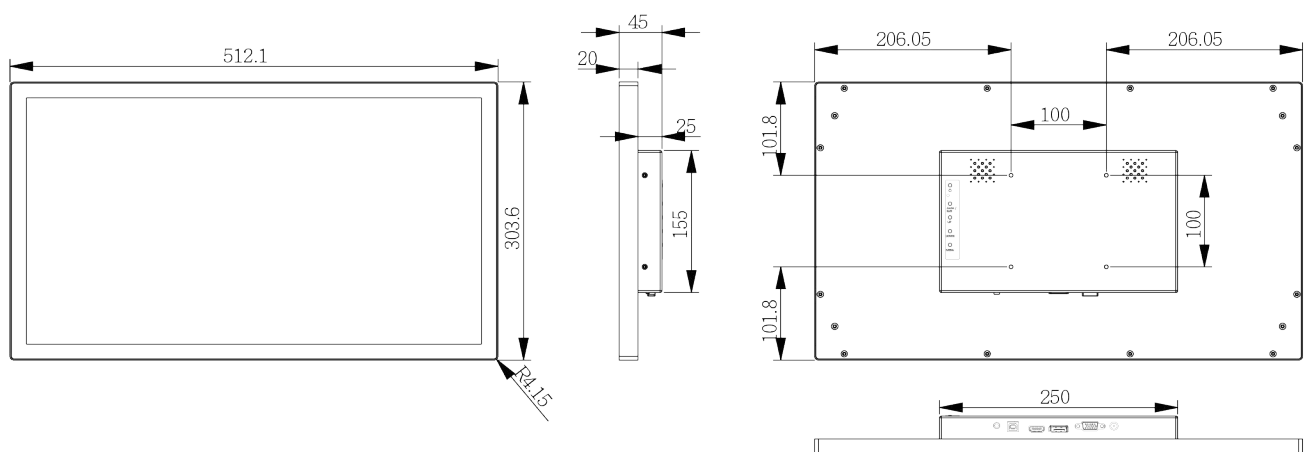
Factory Automation / Heavy Industry / Medical / Public Transportation



Specification	
Active Screen Size	21.5 inch
Aspect Ratio	16:9
Resolution	1920×1080
Panel Brightness	350nits (Typ.)
Contrast Ratio	3000:1 (Typ.)
Response Time	18ms (Typ.)
MTBF	30,000hrs (Min.)
Touch Type	Projected Capacitive Touch (PCAP)
Connectivity	VGA×1, HDMI×1, DisplayPort×1, Audio line in×1, USB type B for touch
Audio Input	3.5mm phone jack
Audio Output	Internal speaker, 3W×2
Function Key	POWER, AUTO, UP, DOWN, MENU
OSD Language	English, 繁中, 簡中
Adaptor Power Input	AC 100-240V 1A, 50-60Hz
Adaptor Power Output	DC 12V 3A
Power Consumption	TBD
Operating Temperature	0°C~50°C
Operating Humidity	10% to 85% (non-condensing)
Storage Temperature	-20°C~60°C
Storage Humidity	5% to 80% (non-condensing)
VESA Compatibility	100×100 mm
Dimensions (W×H×D)	Physical 512×304×45mm
Weight	TBD

* Specification is subject to change without prior notice.

Dimension (unit: mm)



For more information on this and other Phistek products, please visit our website at:

www.phistek.com sales@phistek.com



PHiStek
Display Solution Provider